

# HESS LAKE BATHYMETRY

*DEPTAS*

## LEGEND

x SPOT ELEVATIONS

## FINAL CONTOURS

INDEX

INTERMEDIATE

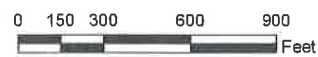
WATERS EDGE

## DEPTH

DEEP: 24

SHALLOW: 0

N



DEPTH CONTOURS BASED ON SURVEYED LAKE ELEVATION 763.5 FEET, NAVD88  
 AVERAGE LAKE DEPTH: 7.2 FEET  
 MAXIMUM LAKE DEPTH: 24.1 FEET  
 SURFACE AREA: 774 ACRES

DR. BY: MMC DE. BY: MMC  
 CHK. BY: RAB APP. BY: LJP

PROJECT NO.  
 118487SG2010

FILE NO. D-4757-01

DATE: APRIL 28, 2010

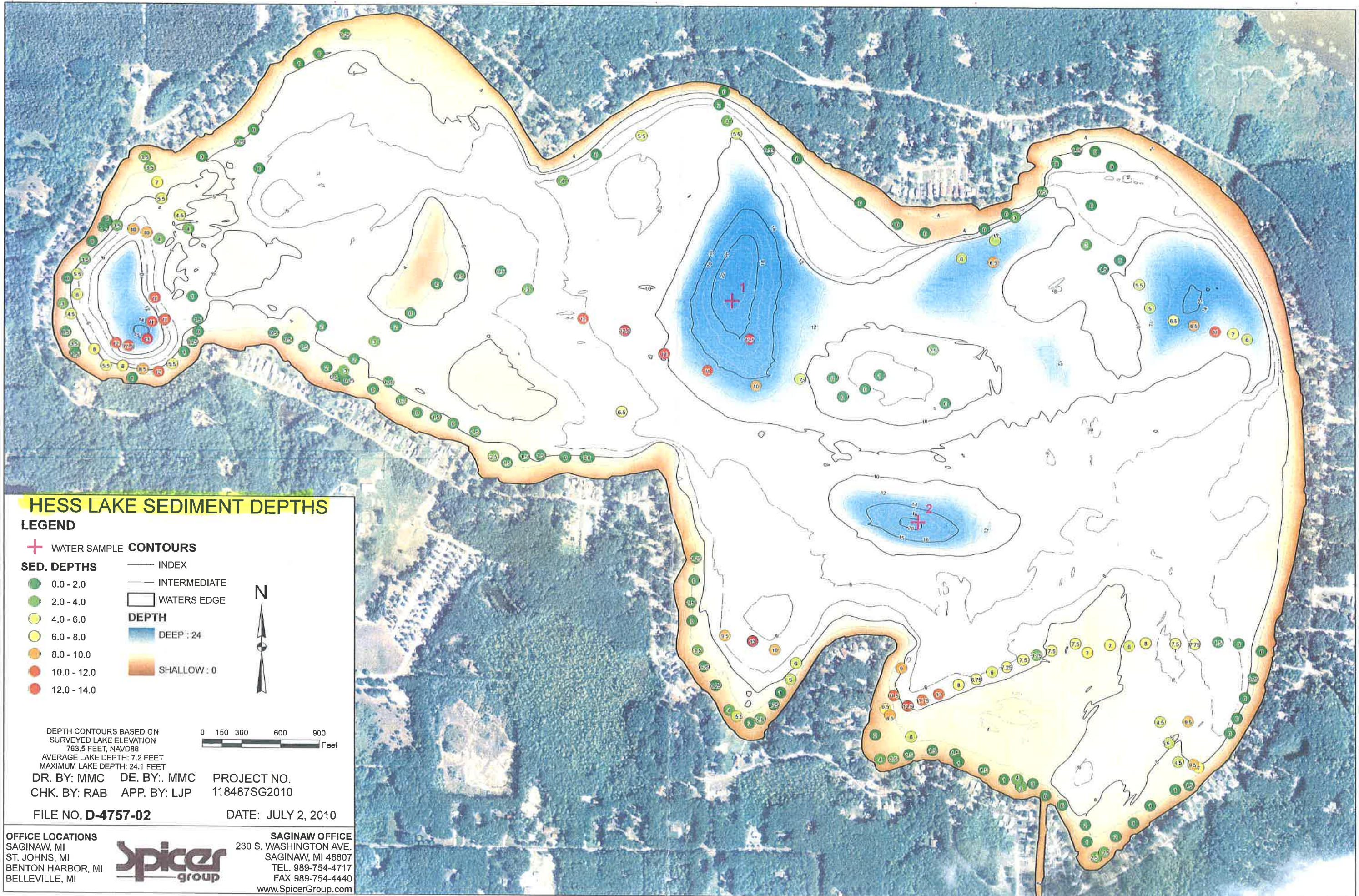
OFFICE LOCATIONS  
 SAGINAW, MI  
 ST. JOHNS, MI  
 BENTON HARBOR, MI  
 BELLEVILLE, MI



SAGINAW OFFICE  
 230 S. WASHINGTON AVE.  
 SAGINAW, MI 48607  
 TEL. 989-754-4717  
 FAX 989-754-4440  
 www.SpicerGroup.com

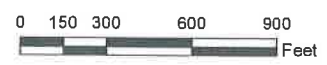
A1

A2



**HESS LAKE SEDIMENT DEPTHS**  
**LEGEND**

- +** WATER SAMPLE
- CONTOURS**
- SED. DEPTHS**
- 0.0 - 2.0
- 2.0 - 4.0
- 4.0 - 6.0
- 6.0 - 8.0
- 8.0 - 10.0
- 10.0 - 12.0
- 12.0 - 14.0
- INDEX
- INTERMEDIATE
- WATERS EDGE
- DEPTH**
- DEEP : 24
- SHALLOW : 0



DEPTH CONTOURS BASED ON  
 SURVEYED LAKE ELEVATION  
 763.5 FEET, NAVD88  
 AVERAGE LAKE DEPTH: 7.2 FEET  
 MAXIMUM LAKE DEPTH: 24.1 FEET

DR. BY: MMC DE. BY: MMC PROJECT NO.  
 CHK. BY: RAB APP. BY: LJP 118487SG2010

FILE NO. **D-4757-02** DATE: JULY 2, 2010

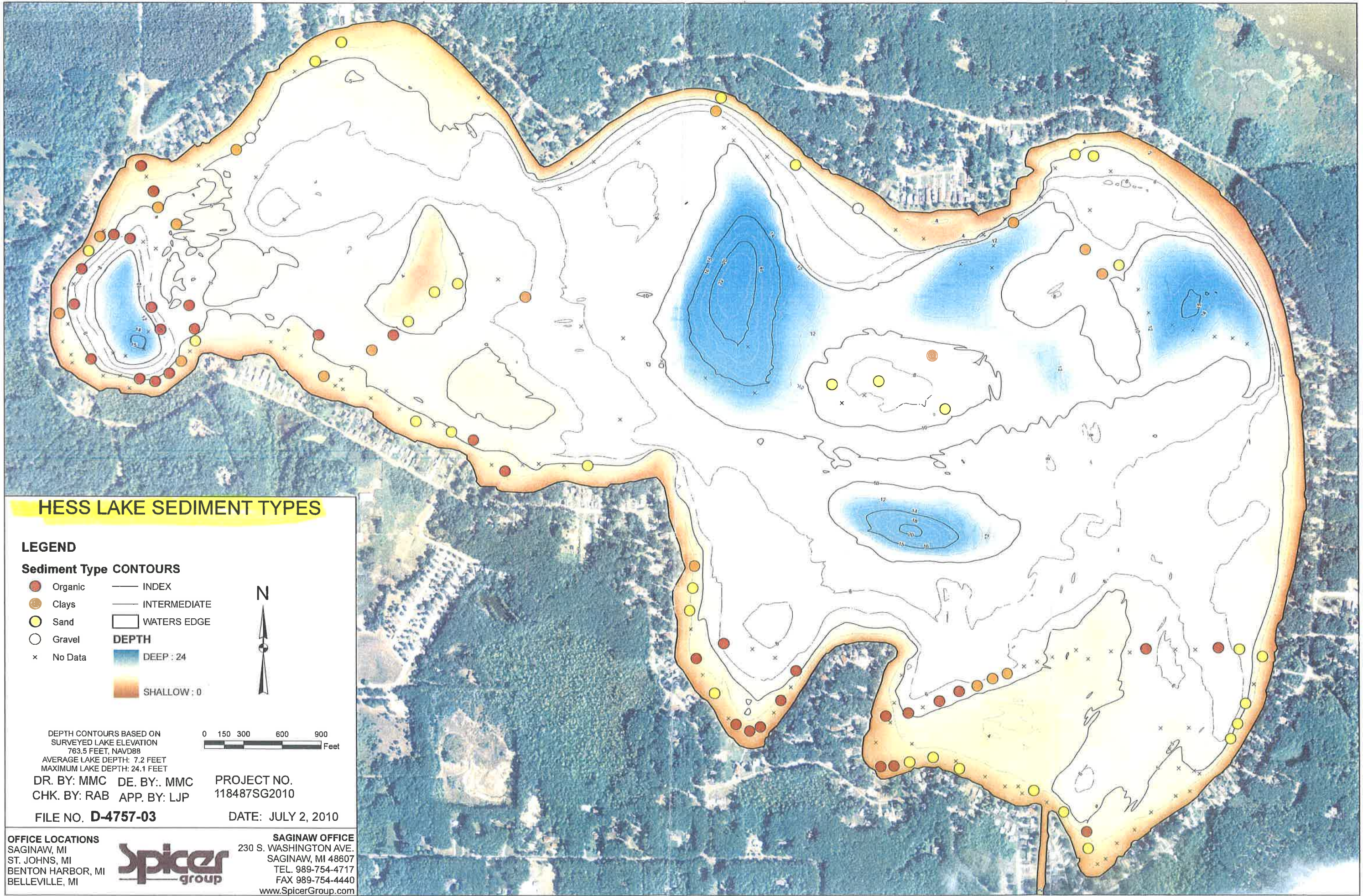
**OFFICE LOCATIONS**  
 SAGINAW, MI  
 ST. JOHNS, MI  
 BENTON HARBOR, MI  
 BELLEVILLE, MI



**SAGINAW OFFICE**  
 230 S. WASHINGTON AVE.  
 SAGINAW, MI 48607  
 TEL. 989-754-4717  
 FAX 989-754-4440  
 www.SpicerGroup.com

A 3

A 4



## HESS LAKE SEDIMENT TYPES

### LEGEND

#### Sediment Type CONTOURS

- Organic
- Clays
- Sand
- Gravel
- x No Data
- INDEX
- INTERMEDIATE
- WATERS EDGE

#### DEPTH

- DEEP : 24
- SHALLOW : 0



DEPTH CONTOURS BASED ON  
SURVEYED LAKE ELEVATION  
763.5 FEET, NAVD88  
AVERAGE LAKE DEPTH: 7.2 FEET  
MAXIMUM LAKE DEPTH: 24.1 FEET



DR. BY: MMC DE. BY.: MMC  
CHK. BY: RAB APP. BY: LJP

PROJECT NO.  
118487SG2010

FILE NO. **D-4757-03**

DATE: JULY 2, 2010

OFFICE LOCATIONS  
SAGINAW, MI  
ST. JOHNS, MI  
BENTON HARBOR, MI  
BELLEVILLE, MI



SAGINAW OFFICE  
230 S. WASHINGTON AVE.  
SAGINAW, MI 48607  
TEL. 989-754-4717  
FAX 989-754-4440  
www.SpicerGroup.com

A5

A6